



**SITE CLEARANCE KEY**

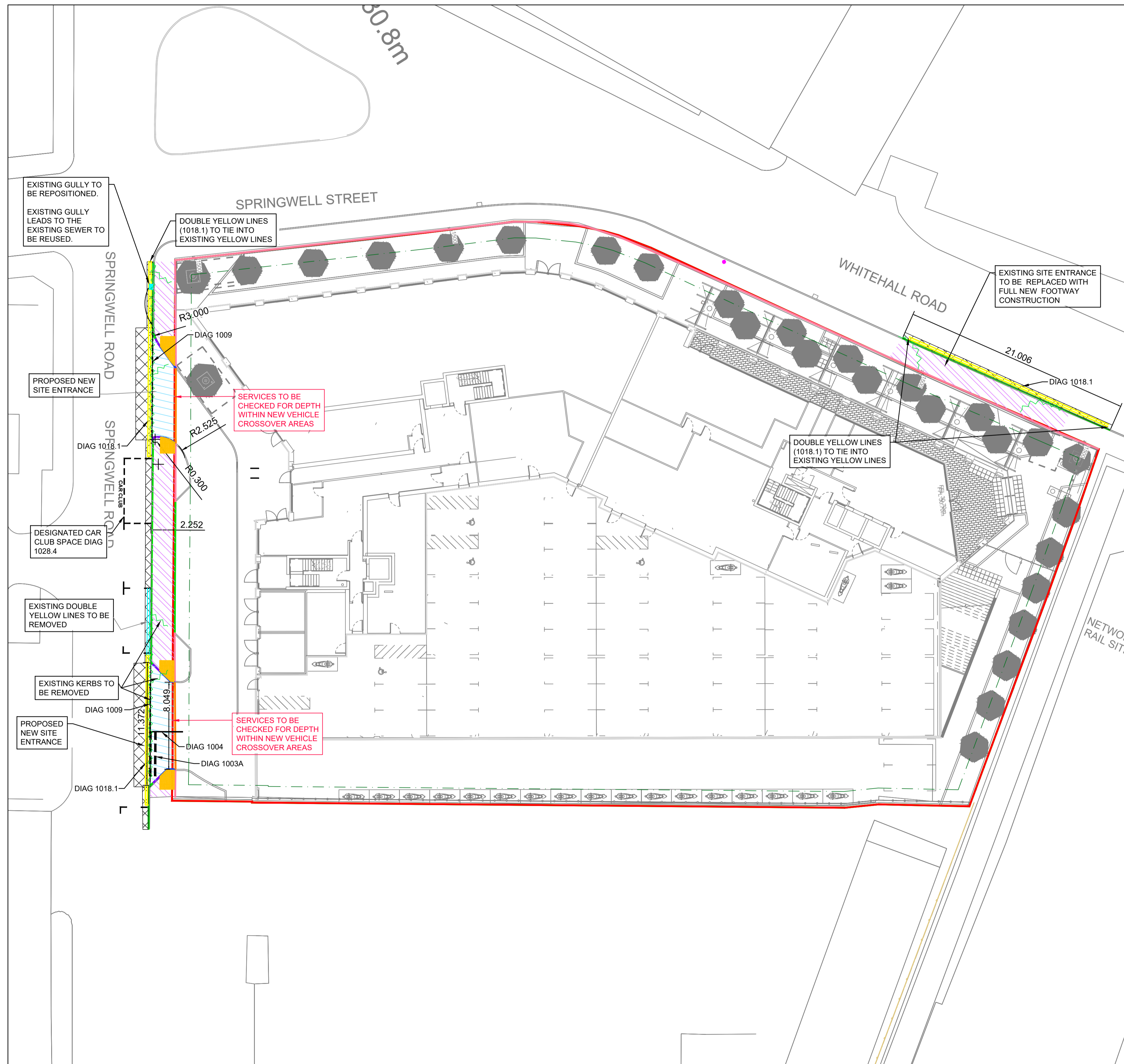
- EXISTING GULLY TO BE REUSED / RELOCATED & COVER TO BE ADJUSTED
- EXISTING TELEGRAPH POLE TO BE RELOCATED
- EXISTING KERBING TO BE REMOVED
- EXISTING DOUBLE YELLOW LINES TO BE REMOVED

**GENERAL ARRANGEMENT KEY**

- TACTILE CROSSINGS
- PROPOSED DOUBLE YELLOW LINES

**KERBING AND SURFACING**

- SITE BOUNDARY
- HB2 KERB (125mm)
- EDGING KERB
- CHANNEL BLOCK
- DROP KERB (0-6mm)
- TRANSITION KERB
- BITUMINOUS CARRIAGEWAY
- BITUMINOUS FOOTWAY
- STEPPED TIE-IN / OVERBREAK REINSTATEMENT
- 1.5m OFFSET FROM PUBLIC HIGHWAY FOR TREE PLANTING



**GENERAL NOTES**

1. DRAWINGS ARE TO BE READ IN CONJUNCTION WITH ALL RELEVANT SPECIFICATIONS, ENGINEERS, ARCHITECTS & SERVICES DRAWINGS, INCLUDING APPROVED BUILDERS WORK DRAWINGS. CONTRACTOR TO NOTIFY ENGINEER OF DISCREPANCIES BETWEEN STRUCTURAL DRAWINGS AND SPECIFICATIONS OR OTHER DRAWINGS.
2. ALL DIMENSIONS ARE IN METERS UNLESS NOTED OTHERWISE.
3. DO NOT SCALE FROM THIS DRAWING. WORK TO DIMENSIONS OR CO-ORDINATES PROVIDED. ALL LEVELS ARE IN METRES AND ALL DIMENSIONS ARE IN METERS. UNLESS OTHERWISE NOTED. ANY AMBIGUITIES, OMISSIONS AND ERRORS ON DRAWINGS, SHALL BE BROUGHT TO THE ENGINEERS ATTENTION IMMEDIATELY.
4. INFORMATION CONTAINED ON THIS DRAWING IS SCHEME DESIGN ONLY AND REQUIRES FURTHER DETAILED DESIGN AND CO-ORDINATION WITH THE CONTRACTOR, DESIGN TEAM AND APPROPRIATE SUB-CONTRACTORS.

- DIAGRAM KEY:**
- 1003A - GIVE WAY LINE, MARK 600mm, WIDTH 200mm, GAP 300mm
  - 1004 - WARNING LINE, MARK 4000mm, WIDTH 100mm, GAP 2000mm
  - 1009 - EDGE OF CARRIAGEWAY LINE, MARK 600mm, WIDTH 100mm, GAP 300mm
  - 1018.1 - DOUBLE YELLOW LINES, CONTINUOUS, 100mm GAP BETWEEN MARKINGS, 100mm WIDTH
  - 1028.4 - ALTERNATIVE TYPES OF PARKING BAY
- ON STREET PARKING BAYS RELOCATED TO SUIT THE NEW SITE ENTRANCE
- EXISTING ROAD MARKING TO BE REMOVED VIA SCABBLING OR HYDROBLASTING. LCC DO NOT ACCEPT THERMAL LANCING.

No	DATE	DRAWN	REV'D ENG.	AMENDMENT
P8	05.05.23	LMc	TS	LANDSCAPING UPDATED TO SHOW TREES 1.5m AWAY FROM HIGHWAY
P7	02.05.23	LMc	TS	MINOR UPDATES TO SUIT LCC HIGHWAYS COMMENTS
P6	24.04.23	LMc	TS	MINOR UPDATES TO SUIT LCC HIGHWAYS COMMENTS
P5	18.04.23	LMc	TS	KEY UPDATED TO SUIT LCC HIGHWAYS COMMENTS
P4	23.01.23	LMc	TS	TACTILE PAVING AMENDED AND SITE CLEARANCE KEY UPDATED
P3	13.12.22	LMc	TS	UPDATED TO SUIT LCC HIGHWAYS COMMENTS
P2	20.10.22	AL	NU	UPDATED TO COMMENTS
P1	17.10.22	AL	NU	PRELIMINARY ISSUE

STATUS	PURPOSE OF ISSUE
S2	FOR INFORMATION

COPYRIGHT:  
The concepts and the information contained in this document are the copyright of Ridge and Partners LLP. Use or copying of the document in whole or in part without written permission of Ridge and Partners LLP constitutes an infringement of copyright.

# RIDGE

CLIENT <b>CITY LIFE</b>	
PROJECT <b>SPRINGWELL GARDENS LEEDS</b>	
DRAFTER AL	ENGINEER NU
TITLE <b>S278 CONSOLIDATED LAYOUT</b>	
SCALE 1:200	SHEET A1
DRAWING No SPGN-RDG-00-ZZ-DR-C-0206	REV P8

**IN ADDITION TO THE RASWA S171 LICENCE, THE CONTRACTOR MUST CONTACT THE HIGHWAYS SUPERVISOR ON 0113 378 7378 AT THE FOLLOWING STAGES OF THE HIGHWAY WORKS:**

1. AT LEAST TEN WORKING DAYS PRIOR TO THE START DATE
2. AT LEAST TWO CLEAR DAYS IN ADVANCE OF EXPOSURE OF FORMATION LEVEL.
3. ON DISCOVERY OF ANY UNFORESEEN CIRCUMSTANCES OR STATUTORY UNDERTAKERS EQUIPMENT.
4. ON COMPLETION

**FAILURE TO DO SO PUTS THE DEVELOPER AT RISK OF HAVING TO RETRACT THE WORKS AND RECONSTRUCT TO HIGHWAYS APPROVAL.**